



Project Scale up | scaling up solutions

Market consultation 2020

Your contacts for this project



Anja Reimann

Project manager

City of Amsterdam

- Working to bring innovation to Amsterdam
- Working in the Chief Technology Office of Amsterdam
- Working on the intersection where technology meets business meets the city

P: +31 (0) 614825085

E: a.reimann@amsterdam.nl



Eefje Smeulders

Purchasing specialist

City of Amsterdam

- Facilitating a fruitful cooperation between government and the market
- Always looking for innovative solutions to societal questions
- Public tenders can be easier and more fun

P: +31 (0) 634164211

E: eefje.smeulders@amsterdam.nl

What is the project?



What is the project about?



1

Government bodies want to scale up market solutions in the region

2

Purchasing track including a research and development phase

3

Solutions are improved during two separate implementation phases

4

Government bodies make their data available

5

Government bodies work together with knowledge partners and the market to purchase the best solutions

Who participates?



Buyers' group

The buyers' group consists of government bodies that want to look for and purchase solutions



Initiator



Knowledge partners

Knowledge partners are involved in the question and support this project with their knowledge



During the project, we want to recruit more government bodies in the MRA who also want to purchase one or more innovations/solutions

What are we looking for?



We are looking for digital and non-digital solutions to predict visitor flows and to influence behavior



We want to predict visitor flows to and from hot spots (excluding commutes).



We want to predict their behavior before arriving at their destination in order to spread them over time, modality and place.



In this way, we want to avoid any one hot spot getting too busy at any one moment.



A hot spot is an event or a location with an event-like character, which is (or can become) too busy. As said before, we exclude work locations and therefore commutes.



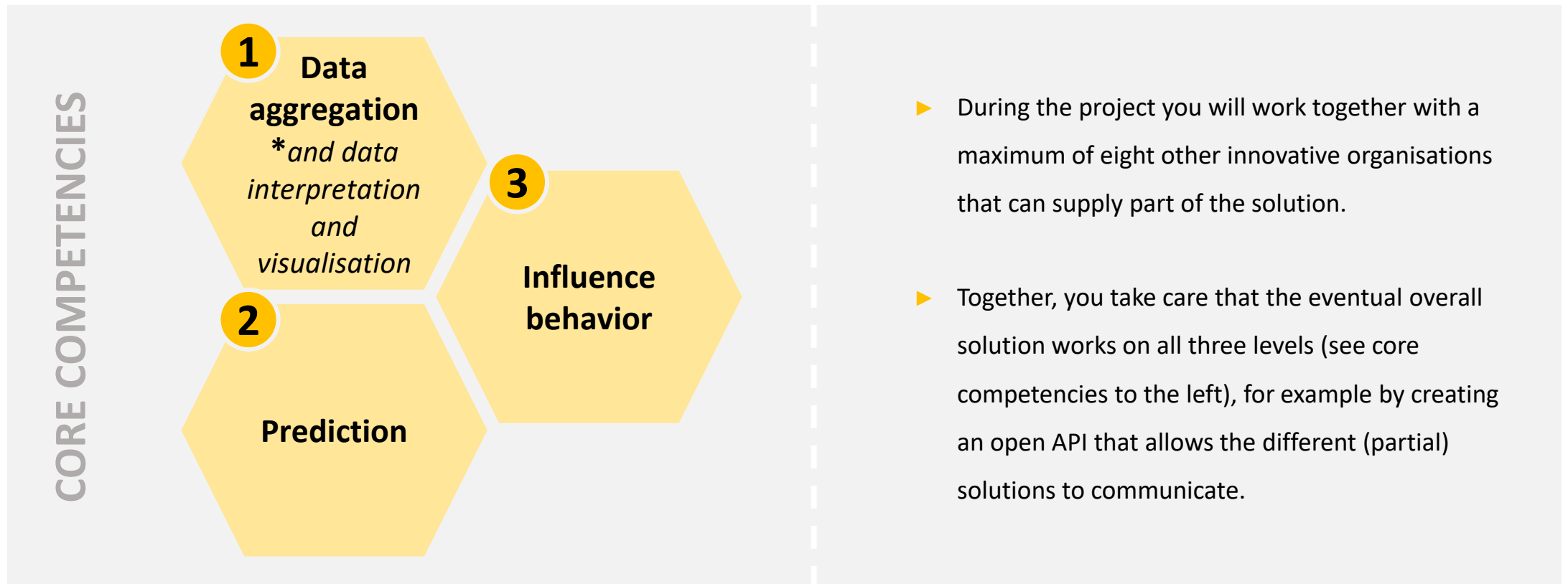
Some visitor flows can be predicted beforehand, for instance because a ticket is required to enter the location. These events are outside of the scope of this project.



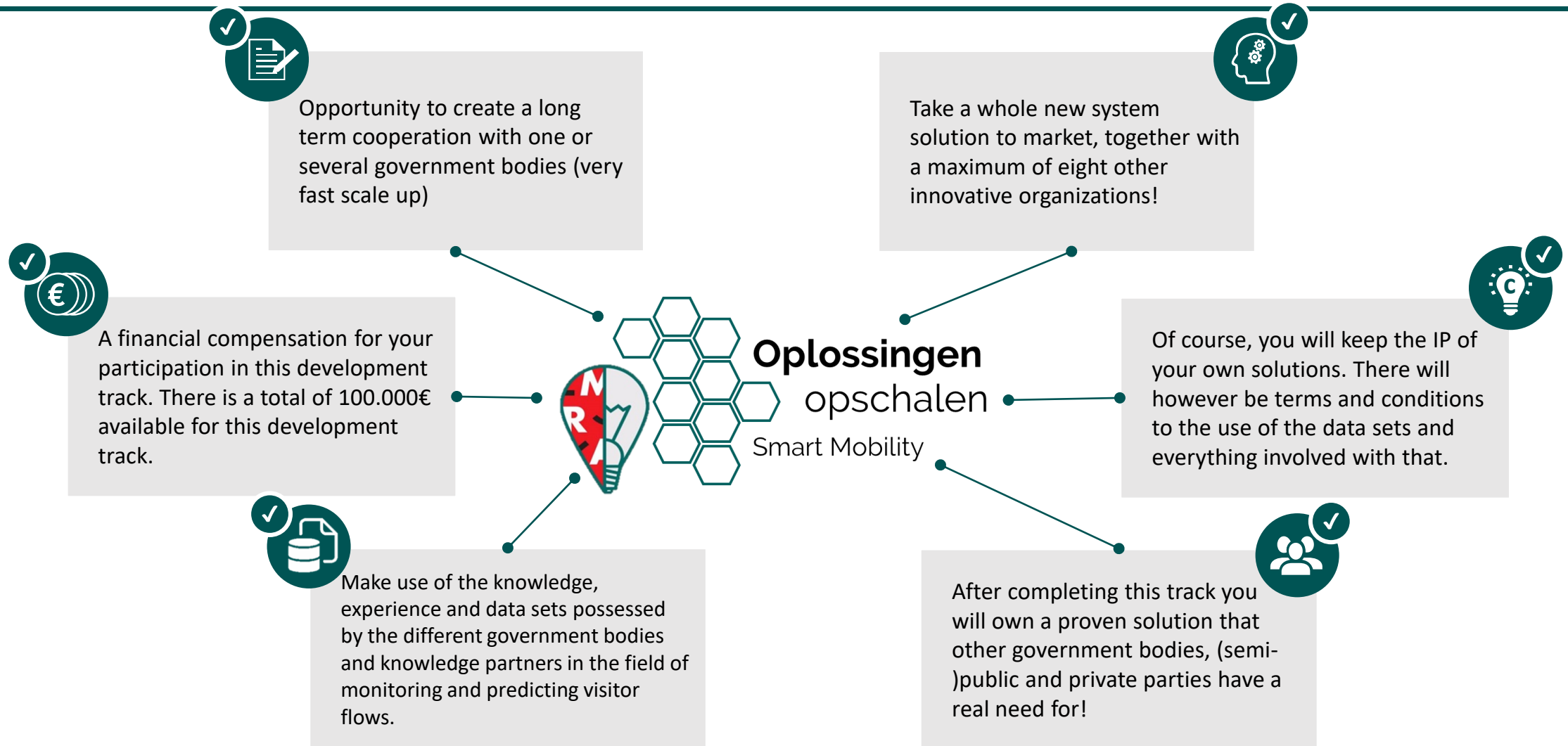
Who are you?



! You are an innovative company that possesses one or more of the core competencies we look for to answer the question.



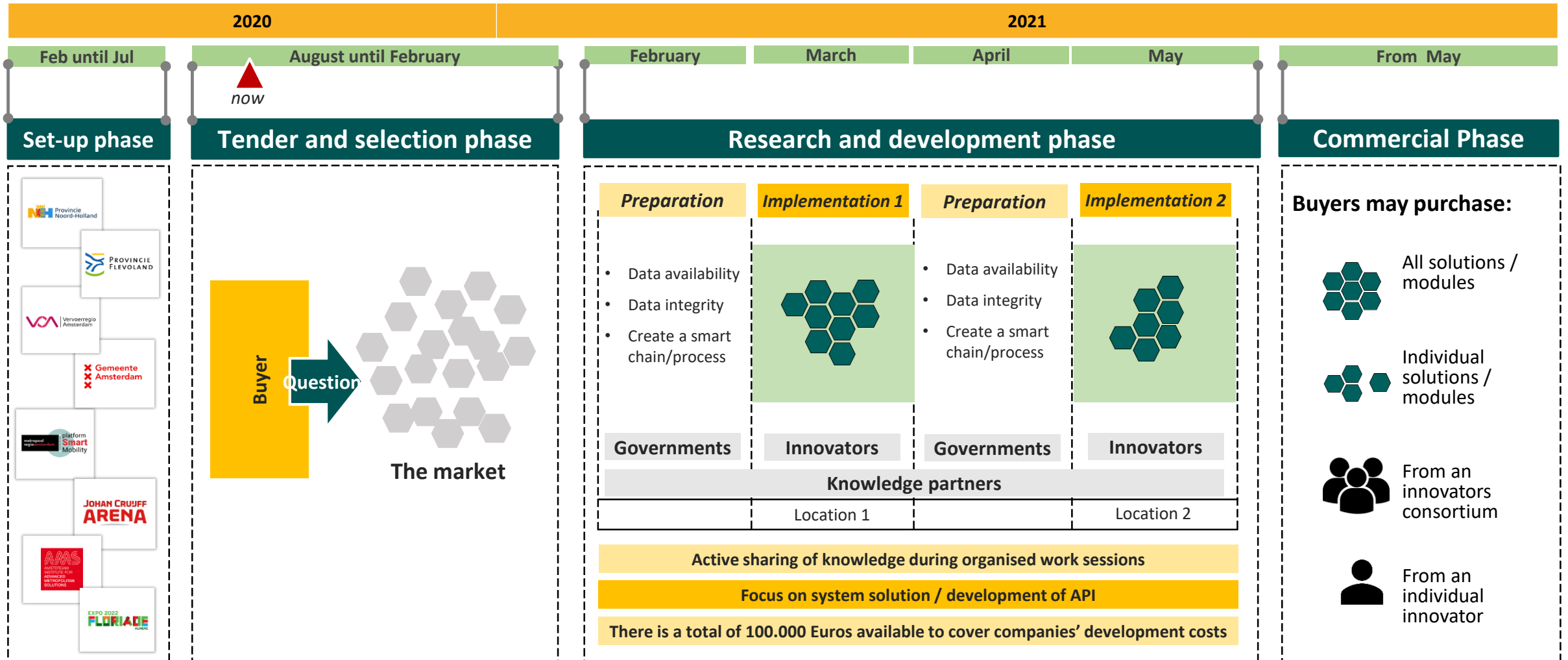
Why should you apply and join us?



What comes next?



The project has four phases and finishes with purchasing the solutions



* All data on this slide is provisional

What can you do?



1 WEBINAR



Join our webinar!

16th of September at 14:00

- You can register [HERE](#)
- You can ask us questions during the webinar

2 Questionnaire



Fill in our questionnaire!

Do you want to give our Request for Tender in november your own spin? Fill in our questionnaire.



 <https://www.linkedin.com/company/gemeente-amsterdam-innovatie/>